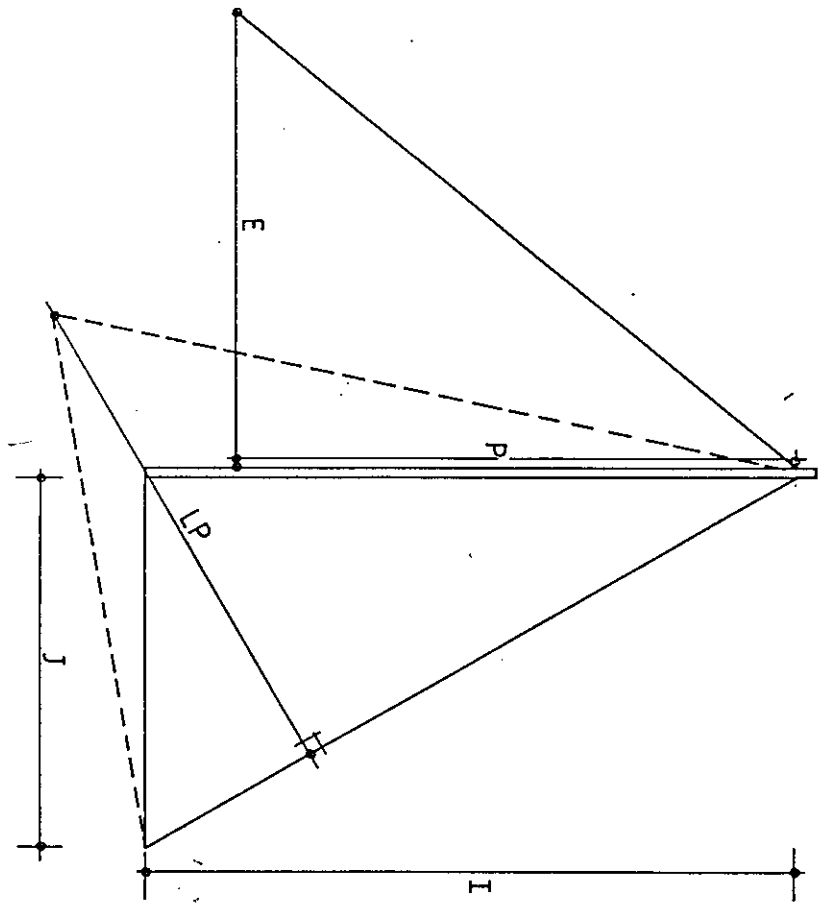


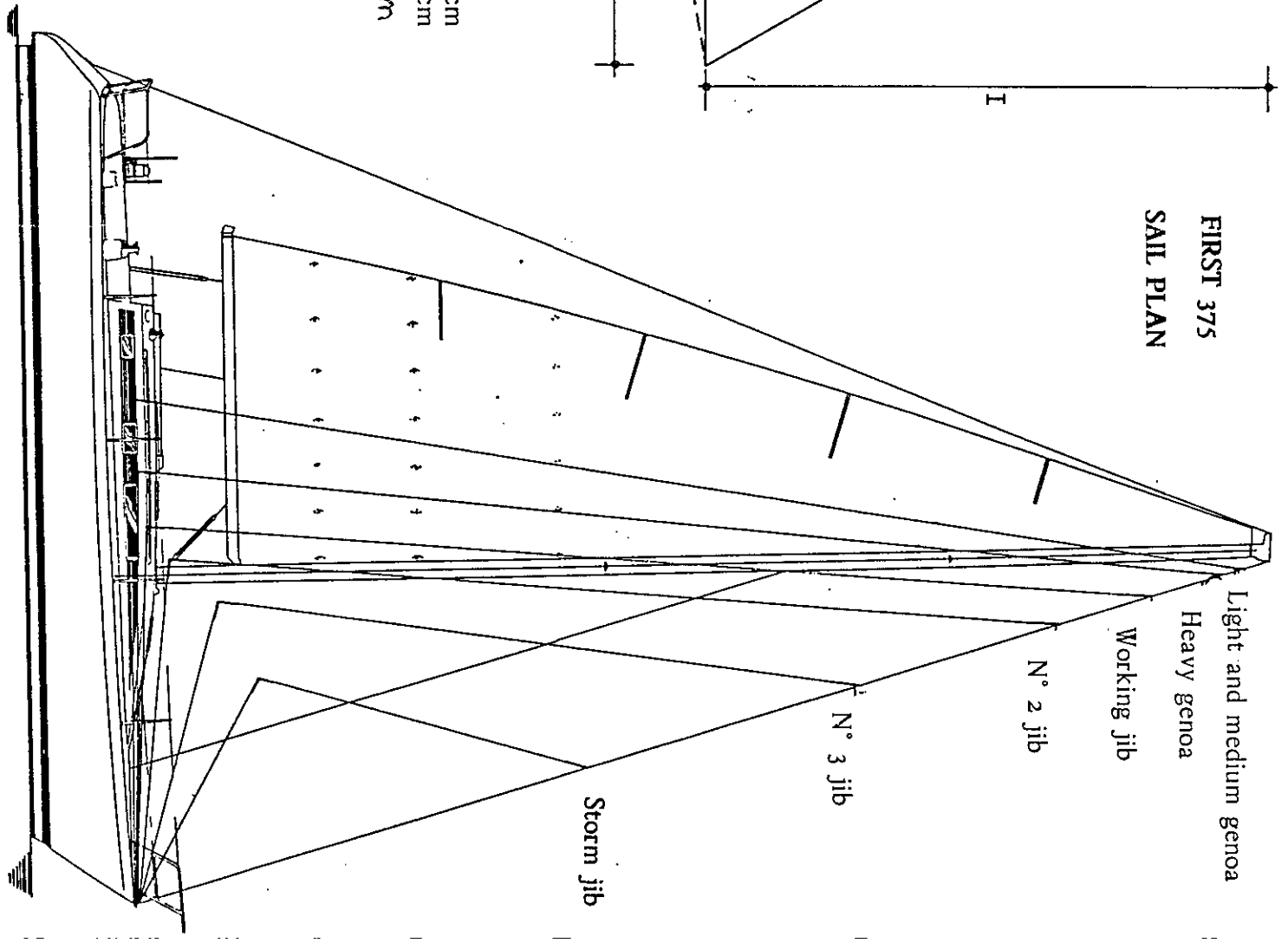
FIRST 375
SAIL PLAN



Std	"S"
E : 4 200	4 400
P : 12 700	13 100
I : 14 500	14 900
J : 4 170	4 170
LP : 6 260	

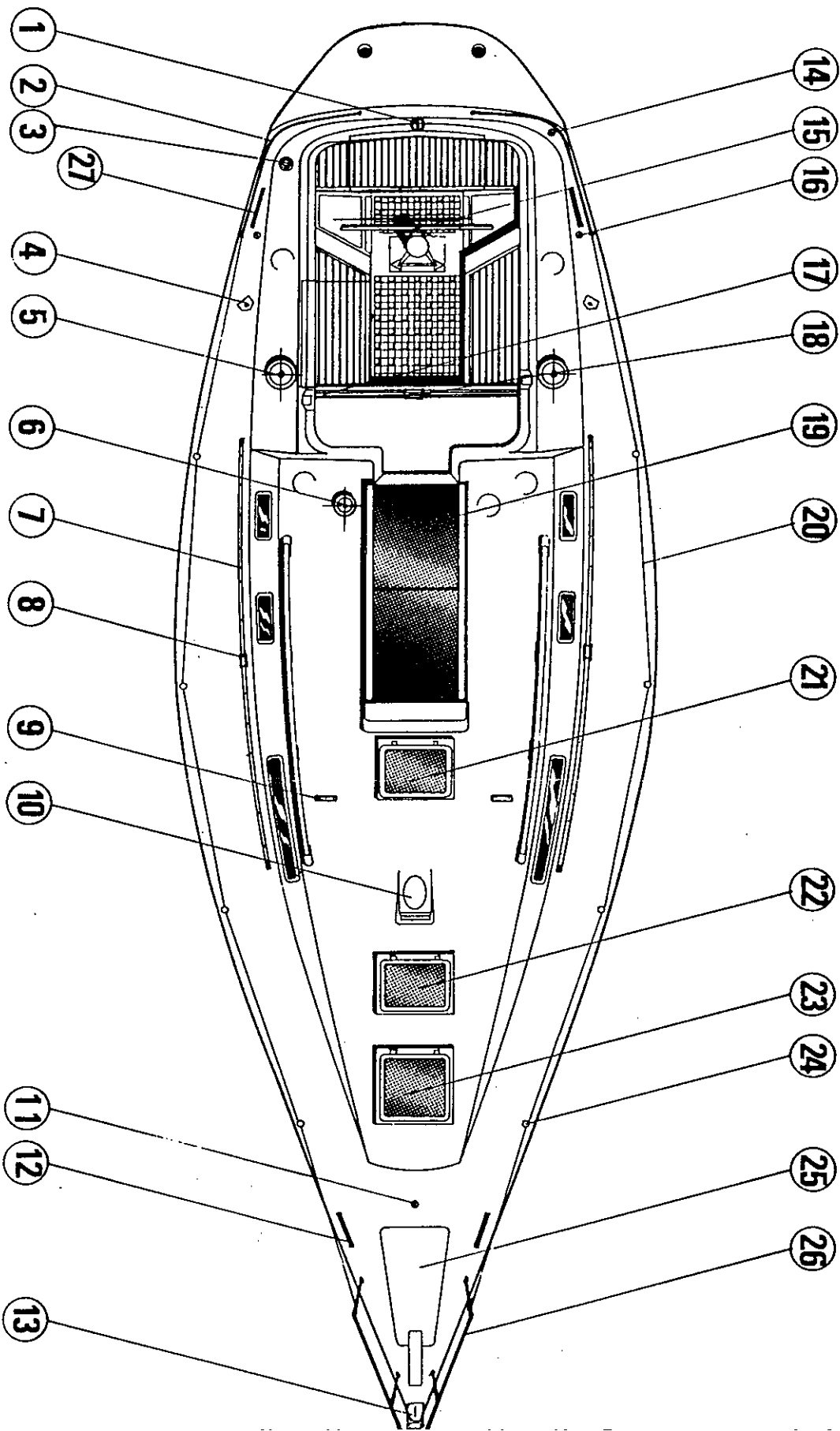
Forestay : Iso
 \varnothing 8 mm
 Length between pins :
 Std : 1 478 cm
 "S" : 1 519 cm

	Std
Light genoa	: 45.97 Sq. m.
Medium genoa	: 45.97 Sq. m.
Heavy genoa	: 39.30 Sq. m.
Working jib	: 31.05 Sq. m.
N° 2 jib	: 25.30 Sq. m.
N° 3 jib	: 17.12 Sq. m.
Storm jib	: 7.65 Sq. m.
Main	: 29.91 Sq. m.
Spinnaker	: 103.31 Sq. m.



FIRST 375

DECK LAYOUT



FIRST 375
DECK LAYOUT

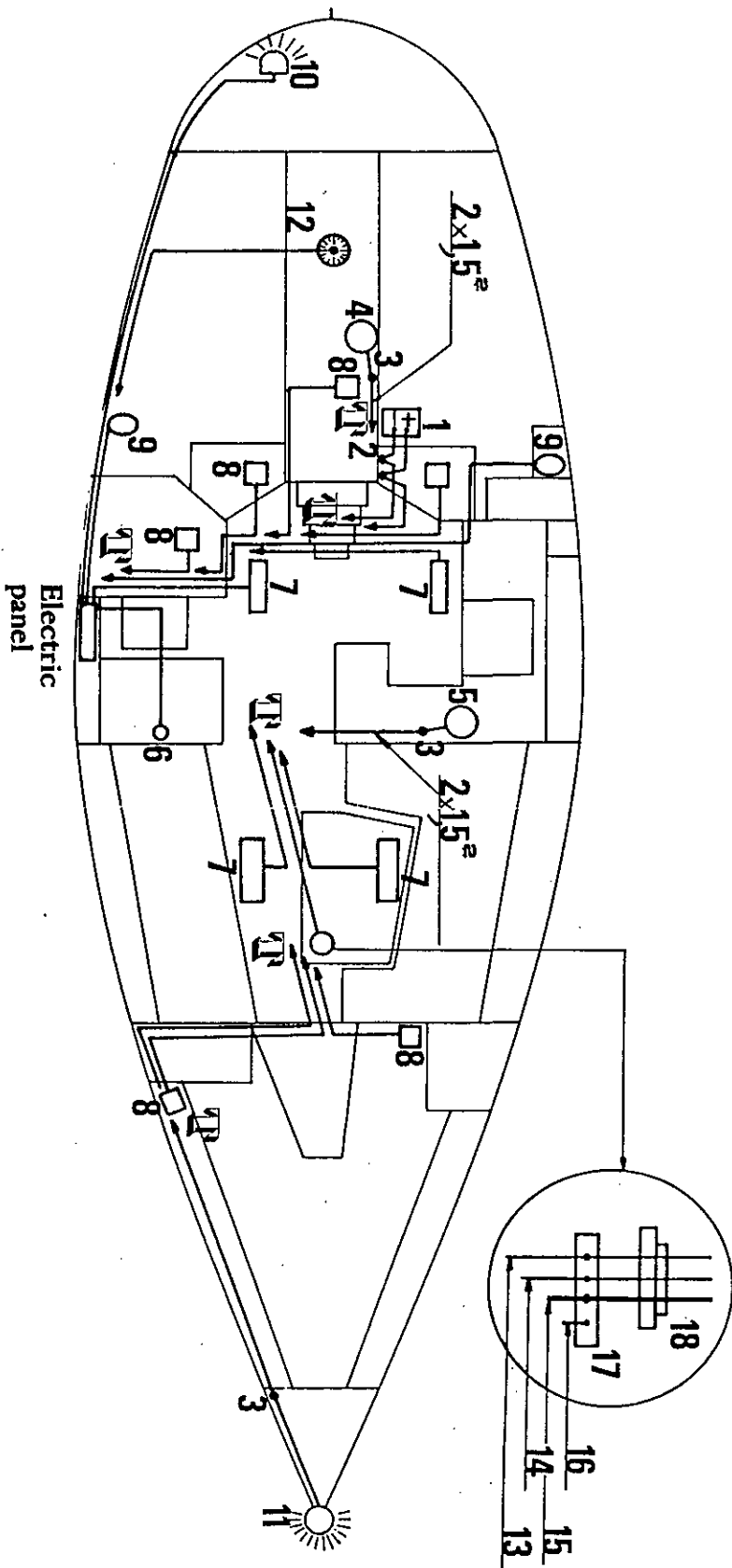
- 01 - Emergency tiller fitting
- 02 - Stern pulpit
- 03 - Manual bilge pump
- 04 - Genoa sheet turning block
- 05 - Genoa sheet winch
- 06 - Main halyard winch
- 07 - Genoa sheet track
- 08 - Genoa sheet car
- 09 - Triple turning block
- 10 - Mast
- 11 - Staysail chainplate
- 12 - Aluminium mooring cleat (300 mm)
- 13 - Bow fitting
- 14 - Diesel intake
- 15 - Steering wheel
- 16 - Spinn sheet block pad eye
- 17 - Main traveller
- 18 - Main traveller car
- 19 - Double sliding hatch
- 20 - Lifelines (double)
- 21 - Opening deck hatch
- 22 - Fixed skylight
- 23 - Opening deck hatch
- 24 - Stanchion
- 25 - Chain locker cover
- 26 - Bow pulpit
- 27 - Aluminium mooring cleat (300 mm)

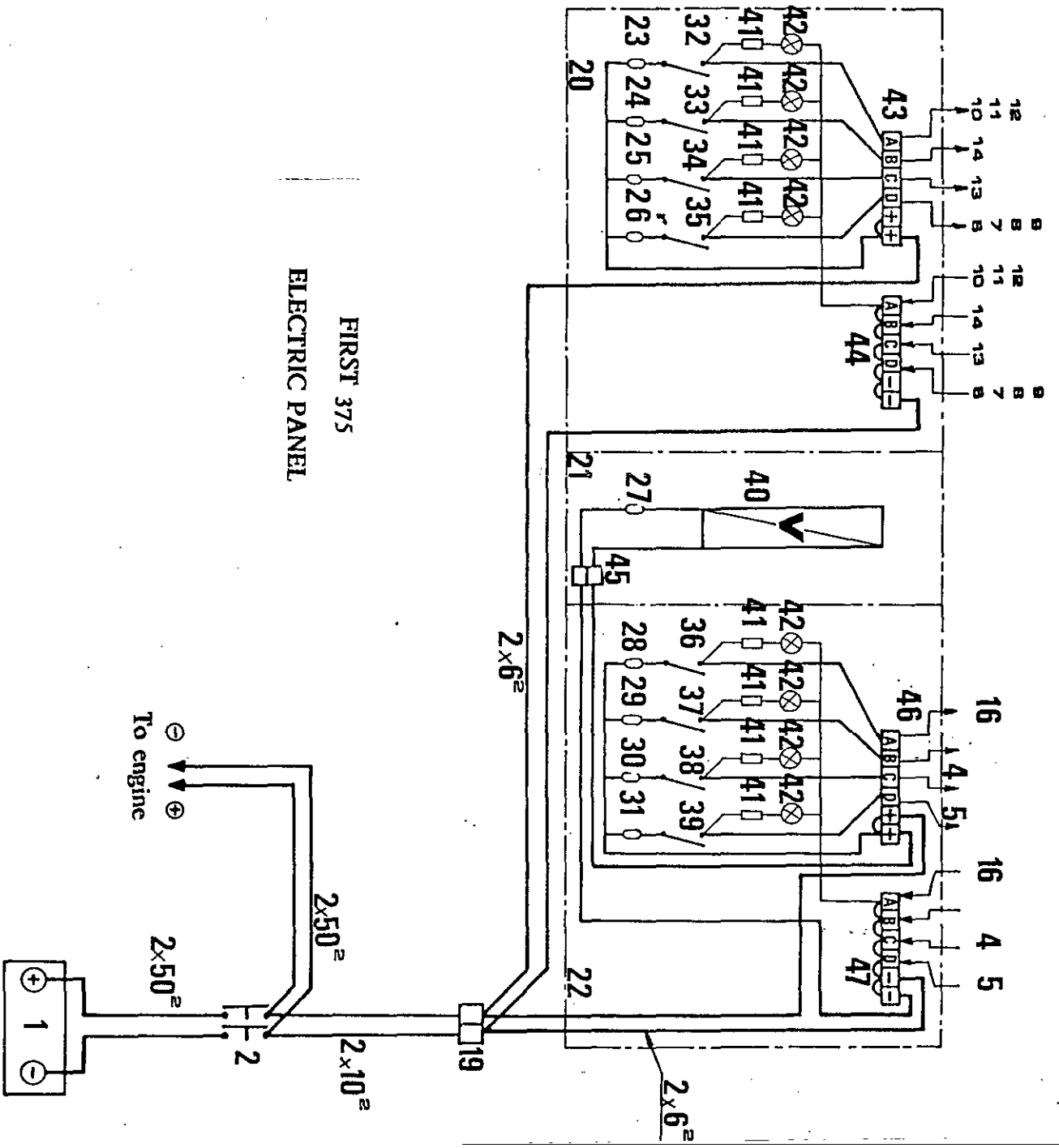
ELECTRIC INSTALLATION

- 47 - Negative connector for options module
- 46 - Positive connector for options module
- 45 - Positive and negative for voltmeter module
- 44 - Negative connector for lighting module
- 43 - Positive connector for lighting module
- 42 - Control light
- 41 - Resistor for control light
- 40 - Voltmeter
- 39 - Bilge pump switch
- 38 - Water system pump switch
- 37 - Refrigeration system switch (option)
- 36 - Deck light switch (option)
- 35 - Inside lighting switch
- 34 - Mooring light switch
- 33 - Steaming light switch
- 32 - Running light and compass light switch
- 31 - 10 A fuse
- 30 - 10 A fuse
- 29 - 16 A fuse
- 28 - 10 A fuse
- 27 - 3 A fuse
- 26 - 16 A fuse
- 25 - 5 A fuse
- 24 - 5 A fuse
- 23 - 10 A fuse
- 22 - Electric panel : options module
- 21 - " " : voltmeter module
- 20 - " " : lighting module
- 19 - Connexion stick
- 18 - Deck wire messenger
- 17 - Connexion stick at mast step
- 16 - Purple deck light wire (1.5²)
- 15 - Black negative return wire for mast lights (2.5²)
- 14 - Purple steaming light wire (0.75²)
- 13 - Red mooring light wire (0.75²)
- 12 - Compass light 3 W
- 11 - Red/green light 25 W
- 10 - Stern light 10 W
- 09 - Oval cabin light 10 W
- 08 - Square cabin light 20 W
- 07 - Fluorescent cabin light 8 W
- 06 - Chart reading lamp 5 W
- 05 - Electric pump for water system
- 04 - Electric bilge pump
- 03 - connexion sticks in derivation box
- 02 - Battery switch
- 01 - 12 V 60 Amp. battery (under port aft berth)

FIRST 375

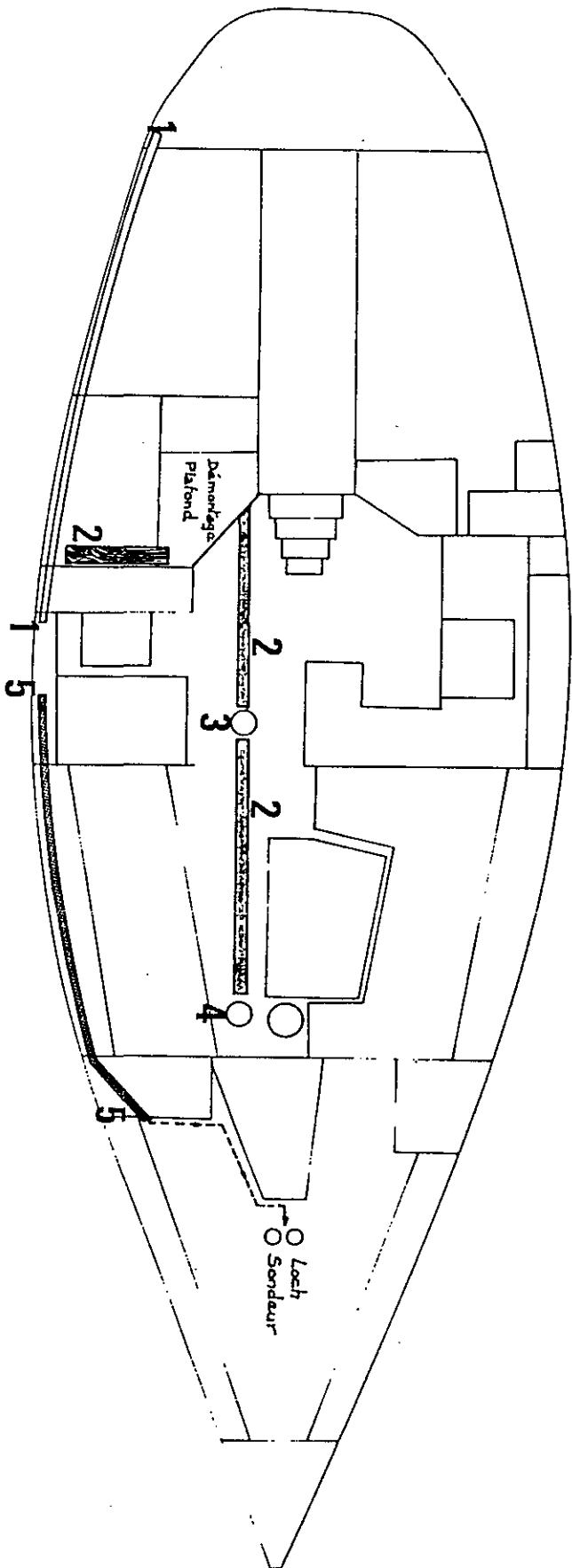
ELECTRIC INSTALLATION








FIRST 375
ELECTRIC PANEL

MESSENGER CONDUITS FOR OPTIONS



- 5 - Wires for log and depthfinder
- 4 - Plug under deck to run mast options wires
- 3 - Plug under deck to run mast options and console repeaters wires
- 2 - Wires for repeaters, windspeed, wind direct., VHF etc.
- 1 - Wires for automatic pilot

	Rigid conduit under deck	50 x 18	Lg = 3.00 m approximately
	Semi rigid hose on hull	Ø 19	Lg = 3.00 m approximately
	Rigid conduit under deck		Lg = 3.50 m approximately

Observation : run a messenger in conduit before electric wire.

FIRST 375

ENGINE INSTALLATION

- 01 - Anode
- 02 - Propeller
- 03 - Propeller shaft bracket
- 04 - Propeller shaft
- 05 - Fresh air intake
- 06 - Diesel oil tank
- 07 - shaft tube
- 08 - Diesel tank shut off lever
- 09 - Stuffing box
- 10 - Fresh air intake hose
- 11 - Exhaust manifold
- 12 - Exhaust pipe
- 13 - Shaft flange
- 14 - Engine cradle
- 15 - Engine
- 16 - Diesel tank vent
- 17 - Diesel return pipe
- 18 - Diesel tank shut off
- 19 - Engine diesel pipe
- 20 - Oil filter
- 21 - Cooling system pipe
- 22 - Water intake with filter and seacock
- 23 - Diesel gauge
- 24 - Anti-siphon

ENGINE INSTALLATION

